



# MOBILE AND CONTAINER TYPE CRYOCHAMBER

FOR SYSTEMIC CRYOTHERAPY

**Creator<sup>®</sup>**  
**cryogenics**

health, beauty  
and biological regeneration

## SYSTEMIC CRYOTHERAPY

Systemic (whole body) cryotherapy is based on the usage of low temperatures in the treatment process. The refrigerant cooling the cryochamber is liquid nitrogen. Treatment in the cryochamber lasts from 2 to 3 minutes. In an adult human, the short, very intense effect of extremely low temperatures (from  $-110^{\circ}\text{C}$  to  $-160^{\circ}\text{C}$ ) triggers off a hormonal reaction resulting in an increase in tissue transformation and an increase in the temperature of the tissue.

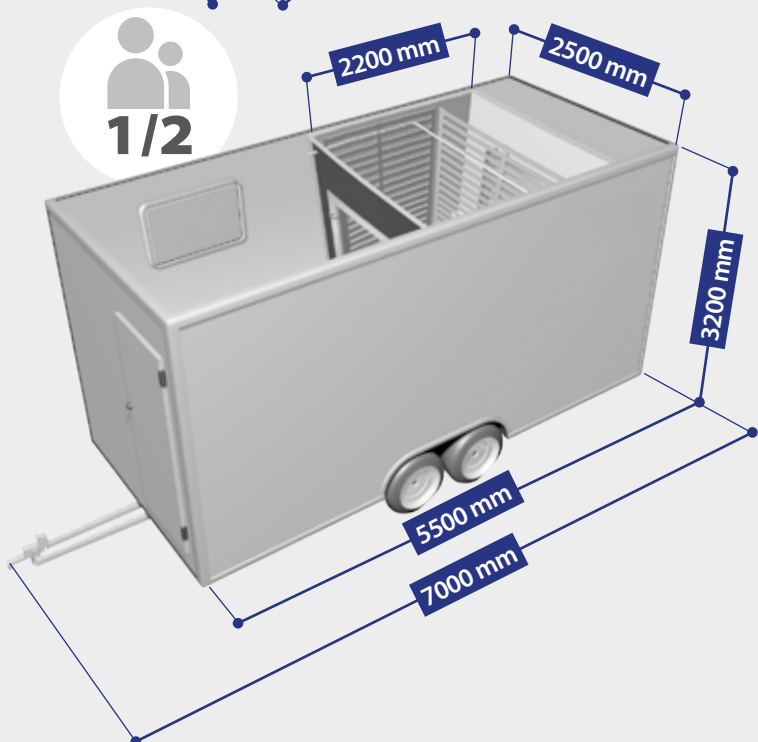
It is an excellent method of biological regeneration that enables a quick and effective regeneration of the body after strenuous effort. It also promotes faster pain relief, especially pain caused e.g. by sport.

## CREATOR Co. Ltd. – Manufacturer of Cryochambers

Our offer is addressed to all those providing rehabilitation services: healthcare institutions (outpatient units, sanatorium-type hospitals, sports and fitness clubs, wellness and spa rooms, recreation centers, hotels as well as individuals and organizations intending to undertake such activities.

### Attention to detail and high quality finish

A prefabricated construction with walls filled with thermal insulation, the interior of the chamber lined with lime wood paneling. Automatic steering after setting work parameters.



### Container type cryochamber

This cryogenic chamber built into a container is mounted on a trailer platform enabling its transportation to its place of destination (health centres, wellness centres, sanatoriums, sports clubs, etc.). In addition to the chamber itself, the container includes an area for patients. Dimensions of the cryochamber fitted into the container: 2650mm x 3000mm x 2300mm.

Basic parameters:

- Operating temperature range in the main compartment: from  $-80^{\circ}\text{C}$  to  $-160^{\circ}\text{C}$  - the possibility of programming per every  $1^{\circ}\text{C}$
- The temperature range in the vestibule:  $-60^{\circ}\text{C}$  +  $-5^{\circ}\text{C}$
- Estimated number of patients per hour: 36 – 72
- Completely safe technology - no patient's direct contact with nitrogen
- Cooling time down to  $-130^{\circ}\text{C}$  within 30 to 45 minutes

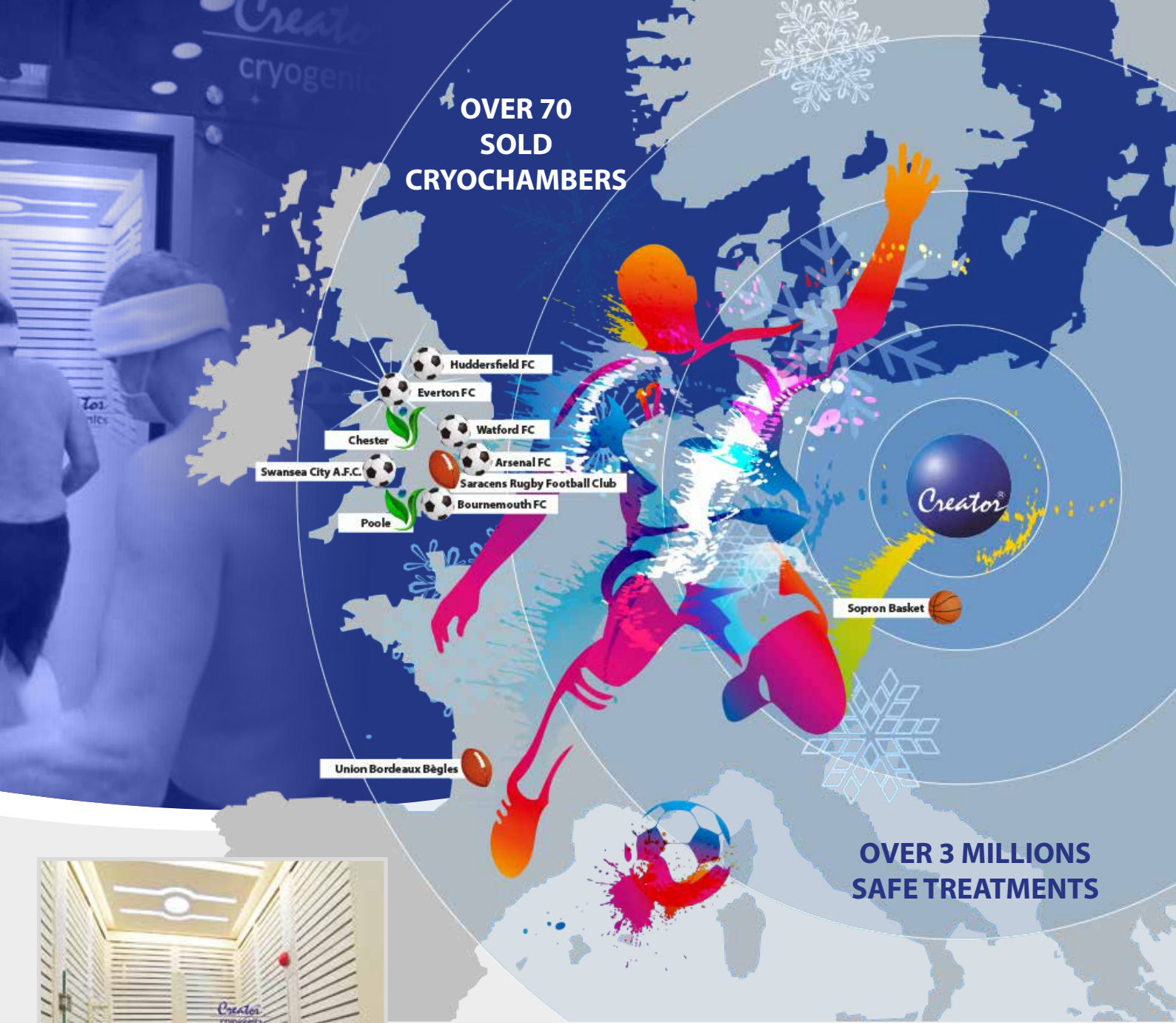
### CR-2017 M1 mobile cryochamber

This is a fully mobile cryochamber on its own chassis, ready for transportation and fast operation at any time, without the need for preparing an entire installation base. The system is ideal in the case of systemic cryotherapy, during sports competitions, tournaments, training camps, and health promoting events. Dimension of the chamber interior fitted in the trailer: 1600mm x 2200mm x 2500mm.

Detailed parameters available on our website:

[www.kriokomory.pl](http://www.kriokomory.pl)





**OVER 70  
SOLD  
CRYOCHAMBERS**

- Huddersfield FC
- Everton FC
- Watford FC
- Arsenal FC
- Saracens Rugby Football Club
- Bournemouth FC
- Swansea City A.F.C.
- Chester
- Poole

**OVER 3 MILLIONS  
SAFE TREATMENTS**

Union Bordeaux Bègles

Sopron Basket



health, beauty  
and biological regeneration





ISO 9001:2015

### CRYOCHAMBER MANUFACTURER

ul. Lotnicza 37; 54-154 WROCLAW; POLAND  
tel. +48 713 620 257; +48 713 620 200  
mobile phone (Poland) +48 503 103 227  
info@kriokomory.pl

BUSINESS REPRESENTATION IN THE UK  
234 Victoria Road, Southend on Sea, Essex,  
SS1 2TB, UK

mobile phone 08001337428 (only U.K.)  
mobile phone +44 7803 809 760  
creator.uk@creator.wroc.pl

[www.cryochambers.co.uk](http://www.cryochambers.co.uk)



ISO 9001:2015



*Our products comply with the requirements of the "Code of Good Practice in Systemic (Whole Body) Cryotherapy"*

Recomendation:



Cooperation:

